

SAFETY AND SCHOOL ENVIRONMENT

Non-CSAP Course Offerings

Your School Offers	does	does not
• art.....	<input checked="" type="checkbox"/>	<input type="checkbox"/>
• drama or theater.....	<input checked="" type="checkbox"/>	<input type="checkbox"/>
• music.....	<input checked="" type="checkbox"/>	<input type="checkbox"/>
• physical education.....	<input checked="" type="checkbox"/>	<input type="checkbox"/>
• opportunity for civic or community engagement.....	<input checked="" type="checkbox"/>	<input type="checkbox"/>
• internet safety program.....	<input checked="" type="checkbox"/>	<input type="checkbox"/>
• International Baccalaureate.....	<input type="checkbox"/>	<input checked="" type="checkbox"/>
• extracurricular activities.....	<input checked="" type="checkbox"/>	<input type="checkbox"/>
• athletics.....	<input checked="" type="checkbox"/>	<input type="checkbox"/>
• preschool program.....	<input type="checkbox"/>	<input checked="" type="checkbox"/>
• full-day kindergarten program.....	<input type="checkbox"/>	<input checked="" type="checkbox"/>
• before-and-after-school care program.....	<input type="checkbox"/>	<input checked="" type="checkbox"/>

Safety and Discipline

Safe schools are a top priority for parents, teachers, and communities.

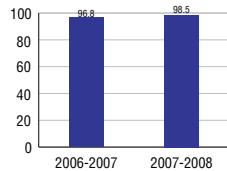
Your school safety and discipline record for the 2007-2008 school year is:

Type of Incident	Number of Incidents Reported	Percent of Total Incidents
Substance Abuse - Drugs		
Substance Abuse - Alcohol		
Substance Abuse - Tobacco		
Felony Assaults		
Fights		
Possession of Dangerous Weapons		
Other Violations Code of Conduct	3	100.0%

Student Attendance and School Calendar

2007-2008	Your School
Enrollment	333
Average Daily Attendance	328
Student Dropouts	N/A

Attendance Rate



Student Information Over Time

	2005-2006	2006-2007	2007-2008
Student Enrollment Stability	97.5%	99.3%	99.4%
Students Eligible for Free and Reduced Lunch	9.5%	10.3%	8.7%

For more information and further details about this report, visit www.state.co.us/schools
Colorado Department of Education, 201 East Colfax Ave. Denver, CO 80203

Windsor Charter Academy
3100/9665/E

680 Academy Court . Windsor, CO 80550 . 970-674-5020
10/20/2008

DISTRICT TAXPAYER'S REPORT

Sources of School District Revenue	2007	District Source of Funds 2007
Local Tax Contribution	\$17,406,864	
State Tax Contribution	9,430,798	
Federal Grants	1,079,929	
State Grants	752,586	
Private/Partnership Grants	12,324	
Other Discretionary Income	2,438,021	
Total District Operating Revenue	\$31,120,522	
Long Term Debt Proceeds	169,836	
Total District Revenue	\$31,290,358	
Total District Operating Revenue Per Pupil =	\$9,015	
Total District Revenue Per Pupil (Including Long Term Debt) =	\$9,064	
District Per Pupil Operating Revenue =	\$5,590	
State Average Per Pupil Operating Revenue =	\$6,080	
District Use of Funds	2007	
Instructional & Instructional Support	\$17,729,437	
Administration	2,158,713	
Building & Facilities Maintenance	2,624,168	
Operational Expenditures	1,791,439	
Debt Service	4,255,572	
Other Expenditures	757,679	
Total District Operating Expenditures	\$29,317,008	
Capital Expenditures	1,487,045	
Total District Use of Funds	\$30,804,053	

District Debt and Capital Construction & Equipment

Total Outstanding Bonded Debt	\$31,605,000
Average Annual Percentage Interest Rate on Debt	4.42%
Amount Raised from Most Recent Bond	\$27,600,000
Amount Spent on New Buildings During Last 2 Years	\$675,646

Accreditation

Accreditation is Colorado's primary accountability system, incorporating achievement levels, academic growth, achievement gaps, post-secondary readiness, improvement planning, and compliance. The state accredits districts and districts accredit individual schools.

District Accreditation Status for the 2007-2008 school year:

Voter Approved Funding Changes

Your community did /did not hold an election in November 2006

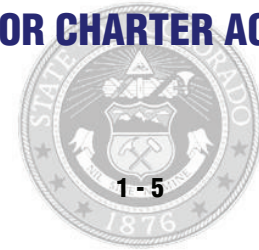
The following items have been approved by voters:

TABOR Override

Bond

Mill Levy Increase

WINDSOR CHARTER ACADEMY



WINDSOR RE-4

Charter

<http://www.weldre4.k12.co.us/>

School Accountability Report

2007-2008 School Year

School Performance Summary

Overall Academic Performance on State Assessments **Excellent**

Academic Growth of Students **Low**

Winner of a John Irwin School of Excellence for the 2007-2008 School Year

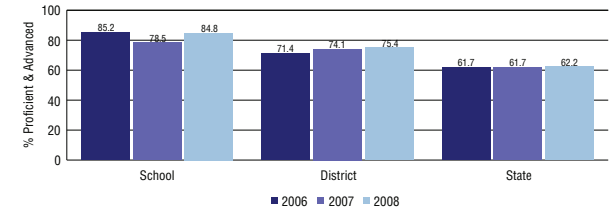
Overall Academic Performance on State Assessments

Each school in the State received a rating of "Excellent", "High", "Average", "Low", or "Unsatisfactory" for student academic performance based on 2007-2008 CSAP and COACT results. The rating is calculated using weighted percentages of each CSAP proficiency level for all content area and grade results for the school, as well as average COACT Reading, Writing, and Math Grade 11 results.

Academic Growth of Students

Each school in the State received a rating of "Low", "Typical", or "High" for student academic growth based on CSAP results. The calculation method is new for 2007-2008. The rating is calculated using student percentile scores matched over two years. More information about the Overall Academic Performance rating and Academic Growth of Students calculations can be found here: http://www.cde.state.co.us/cdeassess/SAR_info.html.

Percent Proficient and Advanced for Elementary Grades for All Content Areas



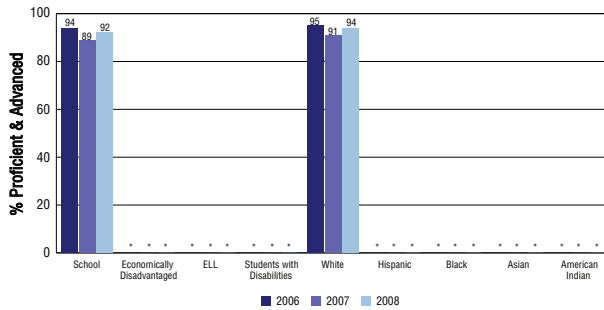
Student Test Scores Used For Calculating Overall Academic Performance

97.4%	Test Scores Counted
0.0%	Test Scores not used due to Language
2.6%	Test Scores not used due to New Student

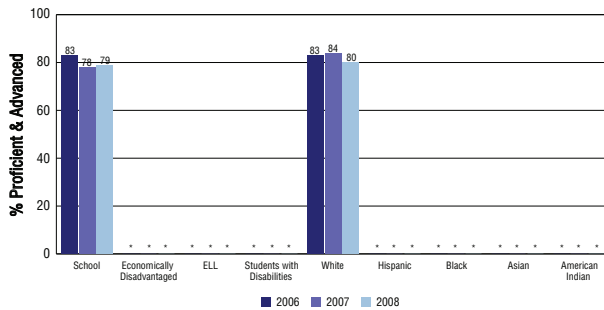
STUDENT PERFORMANCE

These graphs show the percent Proficient and Advanced trends over the past three years for Reading, Writing, and Math. Results are presented for the entire school for all reported grades as well as for different subgroups. Note: * indicates any group with less than 16 student results to be reported.

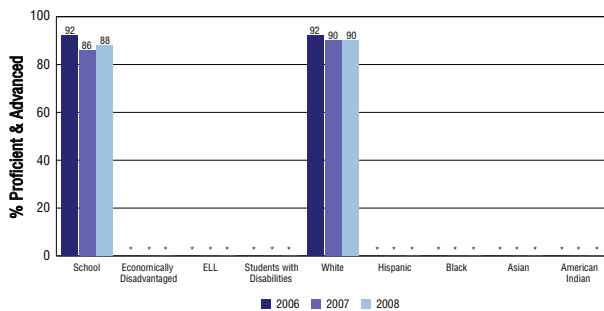
Reading



Writing



Math



SCHOOL INFORMATION

School Pride (as submitted by your district)

- Core Knowledge Curriculum
- Every student receives Spanish, Technology and PE, above Music and Art.
- Kindergarten through 8th grade school.
- WCA will be adding a cafeteria, middle-school gym and 10 classrooms for 2008-2009.

School Goals (as submitted by your district)

WCA is working on a plan to challenge all students, look in-depth to individual needs, and move all our students forward on the CSAP.

No Child Left Behind - Adequate Yearly Progress

Did your school make AYP in reading? Yes Math? Yes
 How many targets does your school have? 12 Met? 12

Based on this school's academic performance, your child may be eligible for one or more of the following; ask your school if your child qualifies for:

Extra academic instruction either before or after-school, or in the summer
 Mentoring

For additional information regarding Adequate Yearly Progress please visit
<http://www.cde.state.co.us/FedPrograms/ayp/index.asp>

How Windsor Charter Academy Compares To Elementary Schools Within A 75-Mile Radius

School	Program Type	Academic Performance	Academic Growth
Tozer Elementary School		No Rating	No Rating
Grandview Elementary School		High	Typical
Skyview Elementary School		High	Typical
Mountain View Elementary School		High	Typical
Timnath Elementary School(1)		High	High
Zach Elementary School(1)		Excellent	High
Traut Core Elementary School(1)		Excellent	High
Winograd K-8 Elementary School(2)		Average	Typical
Bacon Elementary School(1)		High	High
Namaqua Elementary School(3)		Average	Low

1 Located in Poudre R-1 School District.
 2 Located in Greeley 6 School District.
 3 Located in Thompson R-2J School District.

ABOUT OUR STAFF

School Employment

Each year, your district reports to the Colorado Department of Education on the number of adults who work in your school, as well as the type of work they do. Last year, your school employed:

	Your School		District	
	Full Time	Part Time	Full Time	Part Time
Teachers	19	1	230	15
Paraprofessionals	1	2	52	10
Administrators	2	0	15	3
Other Professionals	0	3	20	9
School Support	2	0	61	42
School Counselors	0	0	6	2
School Librarians	1	0	6	1
Total Staff	31		468	

Students per Teacher Ratio

	Student Enrollment	Students per Teacher
Grade 1	50	18.6
Grade 2	50	18.6
Grade 3	50	18.6
Grade 4	44	14.6
Grade 5	25	12.3

Professional Experience of Teachers

	Your School	District
Average years of teaching experience	7	11
Percent of teachers teaching in the subject in which they received their degree	N/A	N/A
Number of teachers with Masters or Doctoral degrees	6	100
Teachers with 3 years or more of teaching experience	14	207
Teachers with less than 3 years of teaching experience	6	38
Number of professional development days	6	6

Salaries

	Your School	District	State
Average Teacher Salary	\$31,577	\$43,596	\$47,494
Average Administrator Salary	\$54,500	\$80,623	\$80,444

Principal: Tracy Stanford

Number of years as Principal at this school: 1 (New Hire 2007/2008)

Number of years as Principal at any school: 2